

Lead

# Teardrop Waltz

(Swing Style)

Rev. Apr. 14,, 2019

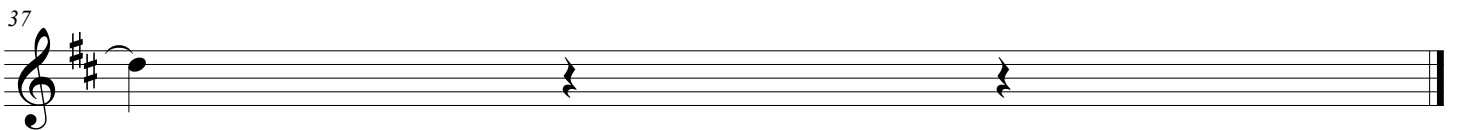
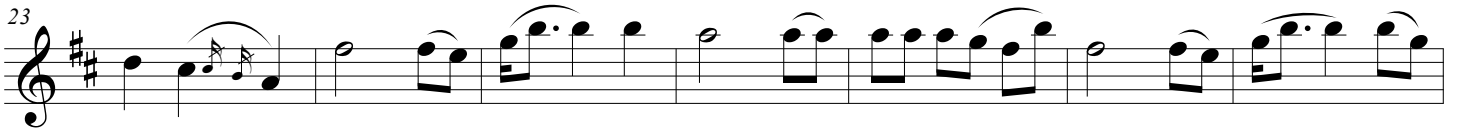
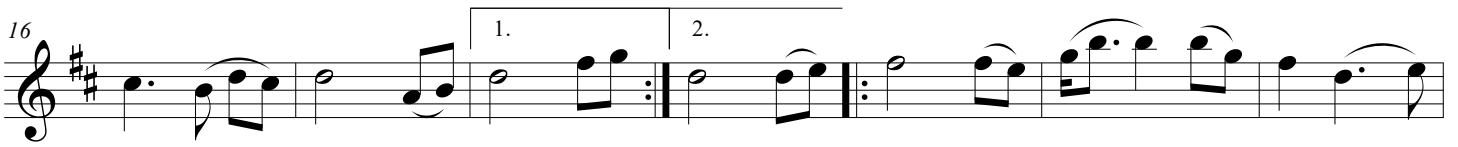
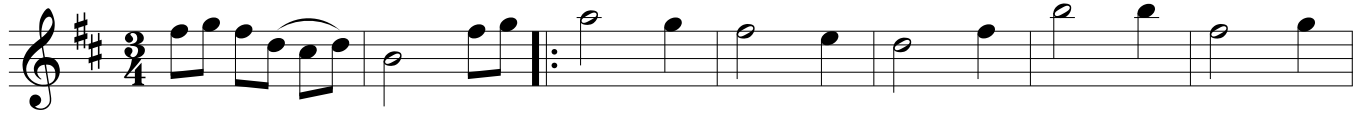
The musical score for "Teardrop Waltz" is written in 3/4 time and the key of D major. It consists of six staves of music. The chord symbols above the staves are: Staff 1: D, D, Bm, D, G; Staff 2: D, D, Bm, G, D, D, Bm; Staff 3: G, D, A7, D, D (1.), D (2.), Bm; Staff 4: G, D, Bm, G, D; Staff 5: Bm, G, D, G, D, D, A7, D; Staff 6: D (1.), D (2.). The score includes first and second endings for measures 14-15 and 35-36.

Harm-1

# Teardrop Waltz

(Swing Style)

Rev. Apr. 14,, 2019



Viola

# Teardrop Waltz

(Swing Style)

Rev. Apr. 14,, 2019

Musical staff 1, measures 1-7. The key signature is one sharp (F#) and the time signature is 3/4. The melody begins with a quarter note G4, followed by eighth notes A4, B4, and C5. A slur covers measures 2 and 3, containing eighth notes D5, E5, and F#5. Measure 4 starts with a quarter note G4, followed by quarter notes A4, B4, and C5. Measure 5 has quarter notes D5, E5, and F#5. Measure 6 has quarter notes G4, A4, and B4. Measure 7 has quarter notes C5, B4, and A4.

8

Musical staff 2, measures 8-15. The melody continues with quarter notes G4, A4, B4, and C5. Measure 9 has quarter notes D5, E5, and F#5. Measure 10 has quarter notes G4, A4, and B4. Measure 11 has quarter notes C5, B4, and A4. Measure 12 has quarter notes G4, F#4, and E4. Measure 13 has quarter notes D4, C4, and B3. Measure 14 has quarter notes A3, G3, and F#3. Measure 15 has quarter notes E3, D3, and C3.

16

Musical staff 3, measures 16-22. Measure 16 has quarter notes G4, A4, and B4. Measure 17 has quarter notes C5, B4, and A4. Measure 18 has quarter notes G4, F#4, and E4. Measure 19 has quarter notes D4, C4, and B3. Measure 20 has quarter notes A3, G3, and F#3. Measure 21 has quarter notes E3, D3, and C3. Measure 22 has quarter notes B2, A2, and G2. A first ending bracket covers measures 19-21, and a second ending bracket covers measures 20-22.

23

Musical staff 4, measures 23-29. Measure 23 has quarter notes G4, A4, and B4. Measure 24 has quarter notes C5, B4, and A4. Measure 25 has quarter notes G4, F#4, and E4. Measure 26 has quarter notes D4, C4, and B3. Measure 27 has quarter notes A3, G3, and F#3. Measure 28 has quarter notes E3, D3, and C3. Measure 29 has quarter notes B2, A2, and G2.

30

Musical staff 5, measures 30-36. Measure 30 has quarter notes G4, A4, and B4. Measure 31 has quarter notes C5, B4, and A4. Measure 32 has quarter notes G4, F#4, and E4. Measure 33 has quarter notes D4, C4, and B3. Measure 34 has quarter notes A3, G3, and F#3. Measure 35 has quarter notes E3, D3, and C3. Measure 36 has quarter notes B2, A2, and G2. A first ending bracket covers measures 34-36, and a second ending bracket covers measures 35-36.

37

Musical staff 6, measures 37-40. Measure 37 has a quarter note G4. Measure 38 is a whole rest. Measure 39 is a whole rest. Measure 40 is a whole rest.

Flute

# Teardrop Waltz

(Swing Style)

Rev. Apr. 14,, 2019

