

Lead

Luther's Carol

Rev. Nov. 19, 2009

A D A

8 E A D A D A Dm

16 E A E B E E

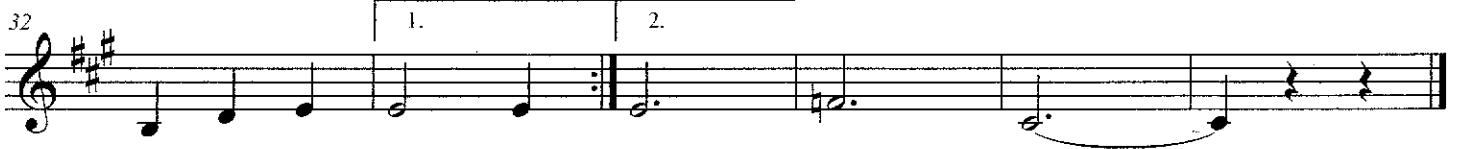
24 B E A D A D A Dm

32 E A 1. A 2. Dm A

Harm-1

Luther's Carol

Rev. Nov. 19, 2009



Flute

Luther's Carol

Rev. Nov. 19, 2009



Viola

Luther's Carol

Rev. Nov. 19, 2009

